

Interdisciplinary Exchange: the Sussex Research Hive

Joanna Ball, Research Support Manager

Frank Verano, SAGE Research Hive Scholar





Library







Exit

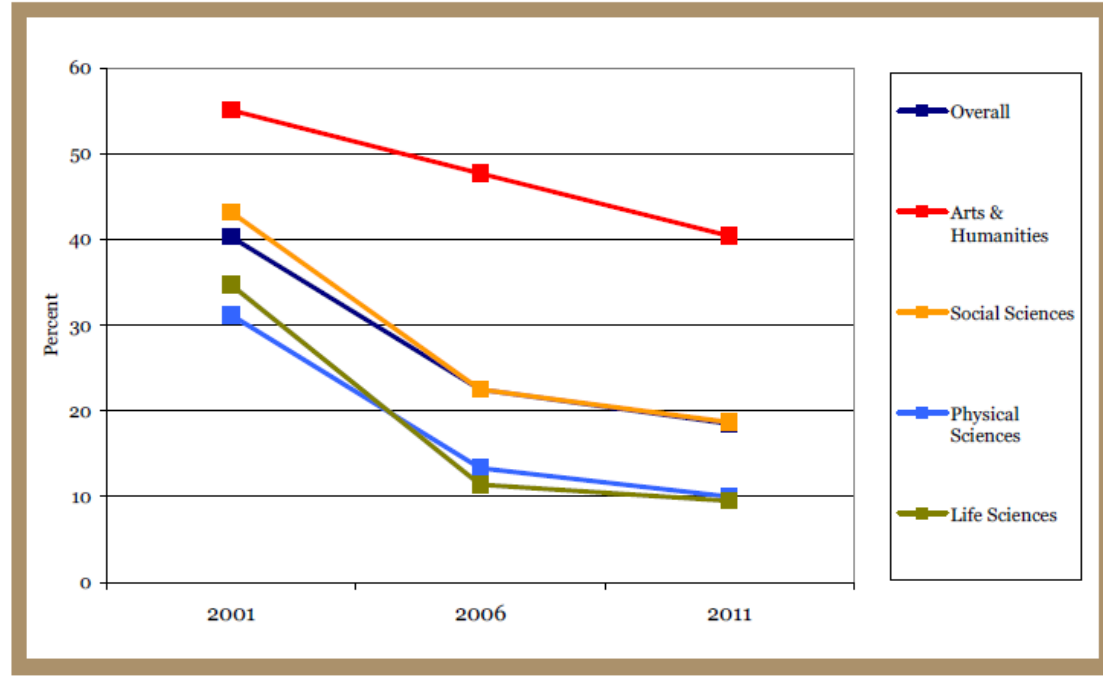
Quiet
study

Books on the shelf include titles such as "The Search of Human Nature", "In Search of Human Nature", and "The Society of Jesus".



Researchers' Use of Academic
Libraries and their Services
A report commissioned by the Research
Information Network and the Consortium of
Research Libraries

Figure 8: The percentage of researchers who visit their library at least once per week and predicted percentage for 2011



April 2007





Wolfson Research Exchange,
University of Warwick

Graduate School Reading Room,
University of Leicester





STAFF
ACCESS
ONLY

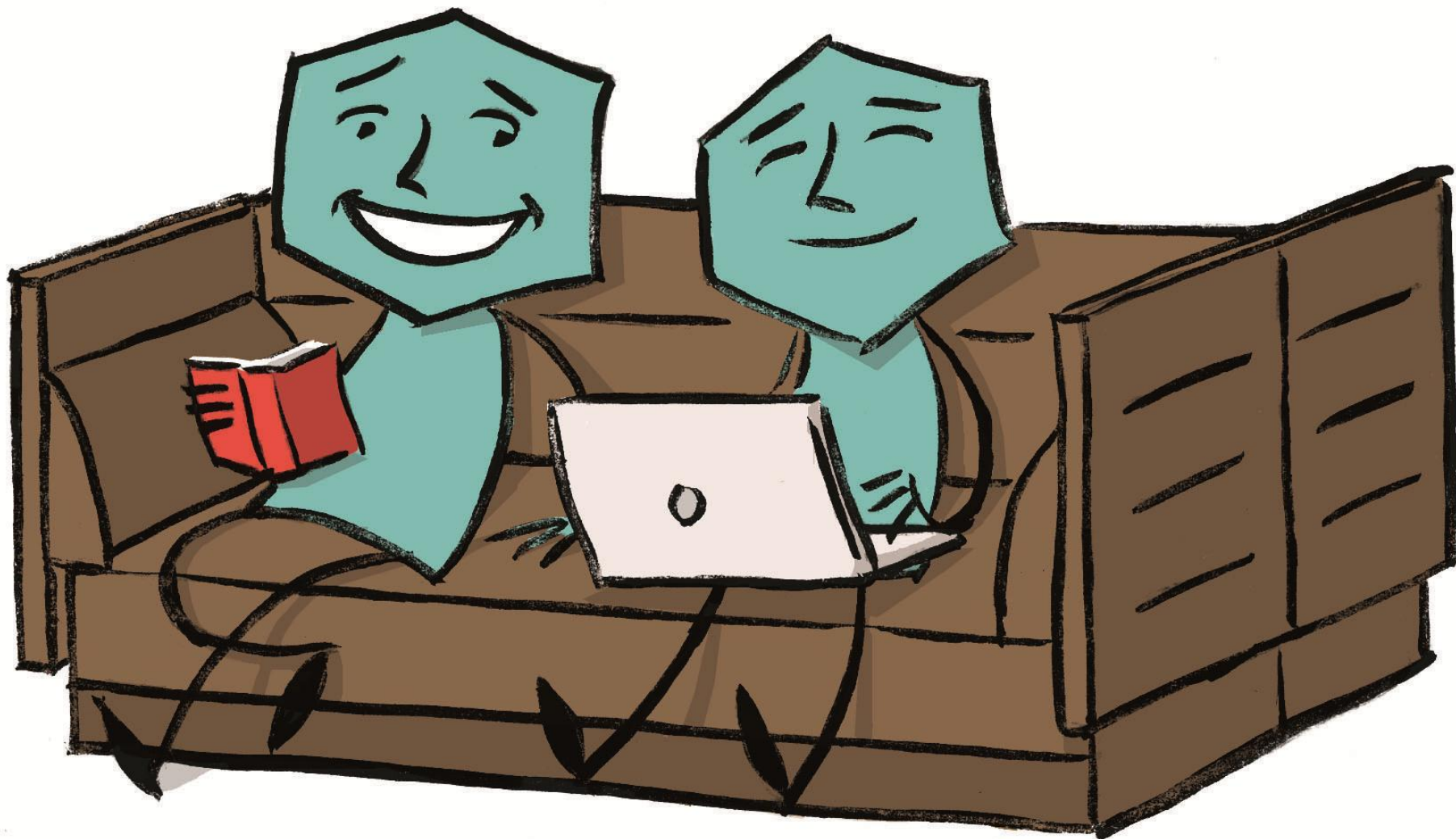


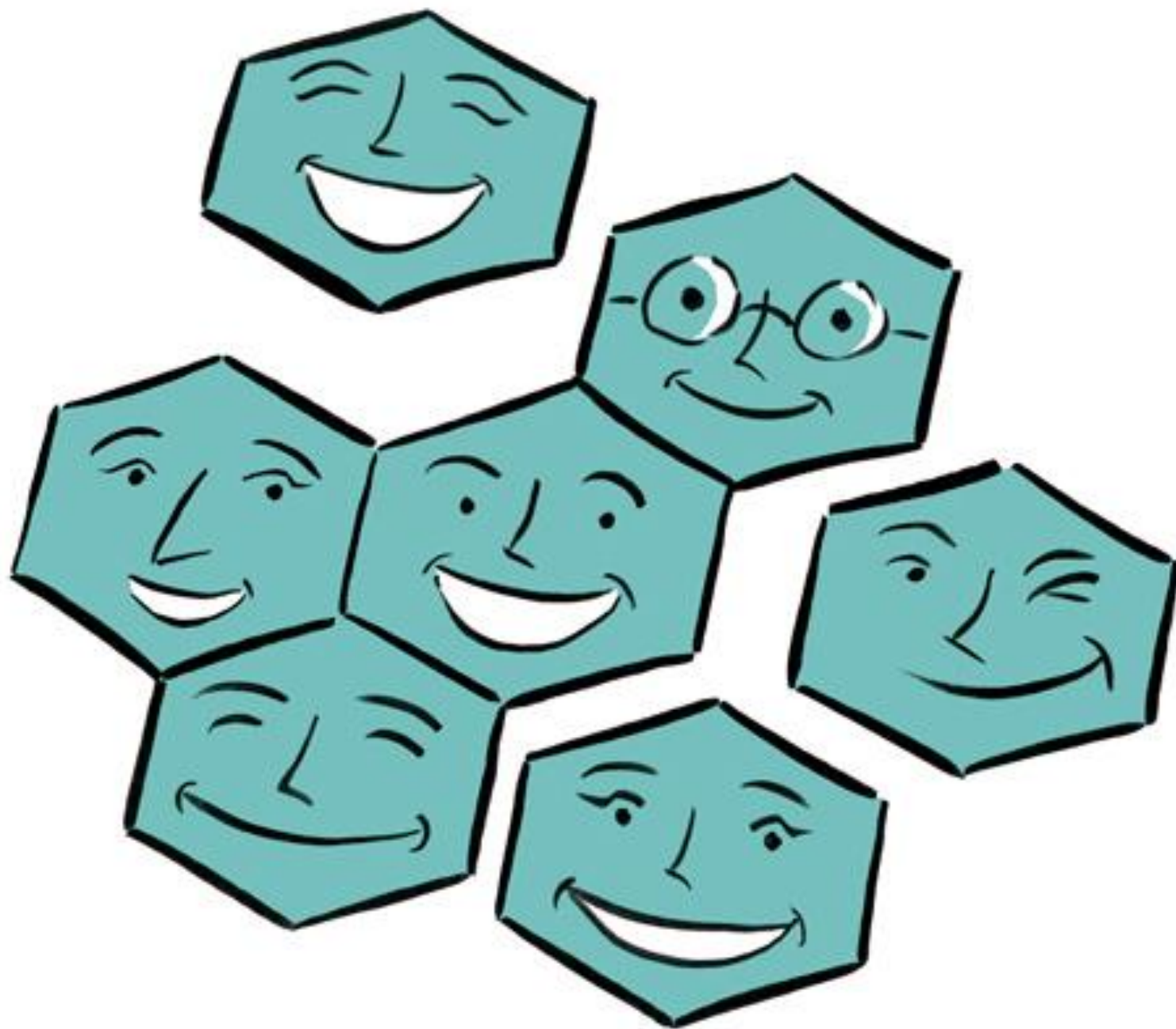






<http://www.dermandar.com/p/coCtAc/university-of-sussex-research-hive>





SAGE Connection



[Home](#) [#SAGE2013 at ALA Midwinter 2013](#) [About SAGE Connection](#) [SAGE Connection Contributors](#) [SAGE Connection Survey](#)

← [English PEN's Writers in Prison](#)

[ESP as the subject of academic inquiry](#) →

SAGE donates to the University of Sussex Library

Posted on [December 21, 2010](#) by [Mithu Lucraft](#)

Late last month, I attended the launch of the University of Sussex library's new space for postgraduate researchers: the 'Sussex Research Hive'. SAGE has contributed funds towards the launch of this space over two years, which will be matched by a government grant.



The donation is being used to support a new Research Support Programme developed by the Library, part of which involves the 'hive' in the Library for researchers and academics to meet and discuss their work.

The opportunity was brought to us by Jane Harvell, Head of the Library's Academic Services, who has worked with Head of Journals Marketing, Bernie Folan, to



What would you like to see on SAGE Connection?

[Click here to take survey](#)

Follow Blog via Email

Enter your email address to follow this blog and receive notifications of new posts by email. If you'd like to receive emails only weekly, please indicate on your subscription. Thank you!

Join 962 other followers

Follow



SAGE on Facebook

[Like](#) 1,500

“You can’t be sure how these spaces will be used;
you are just creating the opportunities for things to
happen”

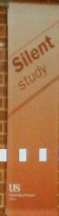
http://www.jisc.ac.uk/uploaded_documents/JISClearningspaces.pdf

Which journal should you submit to?

- Aims and Scope
- Metrics
 - Thompson Reuters (ISI)
 - Scopus (Elsevier)
 - REF (UK) / ERIH (Euro) / ERA (Aus)
- Journal usage
- Publication speed
- Accept / Reject rates
- Discuss with senior colleagues
- What journals do you read?



Los Angeles London New Delhi Singapore Washington DC







facebook



Search for people, places and things



Frank Verano

Home

You are posting, commenting and liking as Frank Verano — Change to Sussex Research Hive



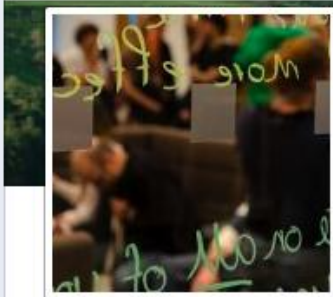
Sussex Research Hive

Timeline

Now

Admin Panel

Create Page



Sussex Research Hive

26 likes · 6 talking about this

Liked

Message



Education

This page is for researches at Sussex to network and keep up to date with all the latest news and activities from the Sage Research Hive – a dedicated library space for Sussex researchers. Follow us on Twitter @sussexreshive



26



About

Photos

Likes

Highlights

Post

Photo / Video

Write something...



Sussex Research Hive shared a link.

Yesterday

6 Friends

Like Sussex Research Hive



See Your Ad Here

Sussex Research Hive



This page is for researches at Sussex to network and keep up to date with all the latest news and a...

Like - Frank Verano likes this.

Advertise Your Page

Chat (Off)



Sussex Research Hive

@sussexreshive

The SAGE research Hive in Sussex library, dedicated community and work space for researchers. This year tweets mainly by @racwood, one of the 2012-13 scholars.

Falmer, Brighton · <http://www.sussex.ac.uk/library/researchhive/>

Follow

423 TWEETS

209 FOLLOWING

210 FOLLOWERS

Follow Sussex Research Hive

Sign up

Tweets >

Following >

Followers >

Favorites >

Tweets



Sussex Research Hive @sussexreshive

22 Nov

#shutupandwrite write up and feedback sussexresearchhive.blogspot.co.uk/2012/11/shut-u... Looking forward to the next event on the 11th December!

Expand



Sussex Research Hive @sussexreshive

13 Nov

@jharvell yeah it was a good turn out wasn't it? I took a couple of quick pics, see earlier tweets.

View conversation



Sussex Research Hive @sussexreshive

13 Nov

@JohnHughesPhD that's amazing, well done! I want #shutupandwrite more than once a month, it was quite a revelation.

View conversation



Sussex Research Hive @sussexreshive 13 Nov
@JohnHughesPhD that's amazing, well done! I want #shutupandwrite more than once a month, it was quite a revelation.
[View conversation](#)



Holly Chard @JohnHughesPhD 13 Nov
Wrote 1,500 words in an hour at the first @sussexreshive #shutupandwrite event. I'd highly recommend it. Thanks for the free coffee as well.
Retweeted by Sussex Research Hive
[View conversation](#)



Sussex Research Hive @sussexreshive 13 Nov
@lizith @_ryanburns That would be great! From your tweets sounds like you're already v productive with your #acwri
[View conversation](#) [Reply](#) [Retweet](#) [Favorite](#)



Sussex Research Hive @sussexreshive 13 Nov
@_RyanBurns Yay! I too felt the internet procrastination urge and it was amazingly easy to ignore. #shutupandwrite
[View conversation](#)



Ryan Burns @_RyanBurns 13 Nov
#shutupandwrite really useful event - I wrote 500 words when I would normally have looked at 500 YouTube videos. #productive @sussexreshive
Retweeted by Sussex Research Hive



Sussex Research Hive
13 November

Today! The first of hopefully many 'shut up and write' sessions - be there at the Library cafe at 14:30. If you would like a hot drink, just let the catering staff know you're taking part in the event! See you there!

[Like](#) · [Comment](#) · [Share](#)

[Like](#) Laura Ellen Joyce and 3 others like this.



Shim Shim i loved today's session, it was very inspiring 😊 thank you for organizing such a simple but effective event 😊 looking forward to the next one 😊
13 November at 22:11 · [Like](#) · [1](#)



Si Ma Thanks for today's "Shut up and write" session!! a brilliant idea, a friendly gathering and surprisingly effective!!!
13 November at 22:14 · [Like](#) · [1](#)



Write a comment...



Sussex Research Hive

THURSDAY, 22 NOVEMBER 2012

Shut up and Write! feedback

Thanks so much to all who attended the first Research Hive Shut up and Write event in the Library Cafe on Tuesday 13th November. I think everyone found it really useful. It was a great way to meet new people aswell at the same time as being productive, and I really enjoyed how it made writing into more of a social activity.

I managed to write 1,700 words of research notes and I was on a real high afterwards. The positive peer pressure of everyone typing around




There was an error in this gadget

MY BLOG LIST

 **Doctoral School blog**



Festive Fayre, 12th December, mince pies, mulled wine, treasure hunt

 **The Thesis Whisperer**
How to use deliberate practice to improve your writing

<http://www.sussex.ac.uk/library/staff/research/hive>

<https://twitter.com/sussexreshive>

<http://sussexresearchhive.blogspot.co.uk/>

<http://www.facebook.com/SussexResearchHive>

Joanna Ball – j.e.ball@sussex.ac.uk

Frank Verano – f.verano@sussex.ac.uk